

# European session: WtE situation in Austria

Alexander Kirchner

14.05.2024

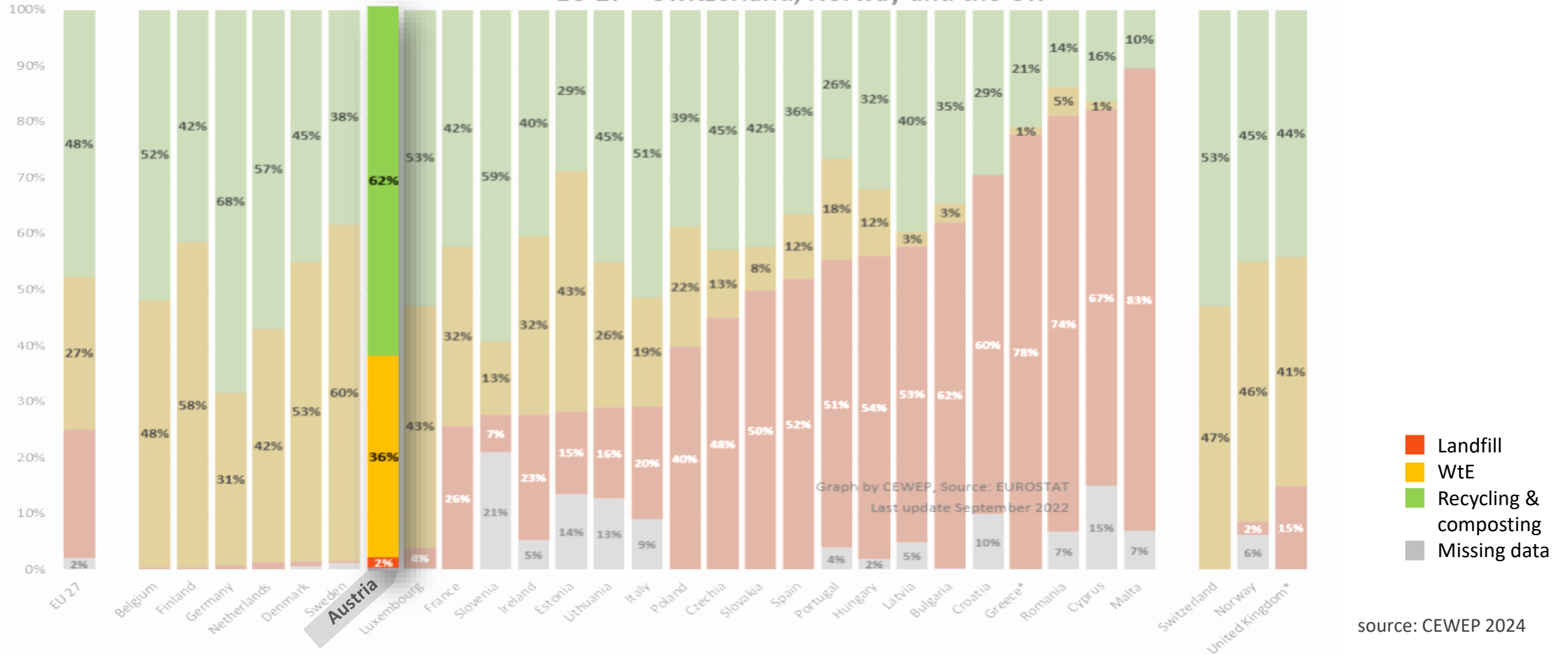
*IFAT*

# Austria is performing well in waste management



## Municipal waste treatment in 2020

EU 27 + Switzerland, Norway and the UK

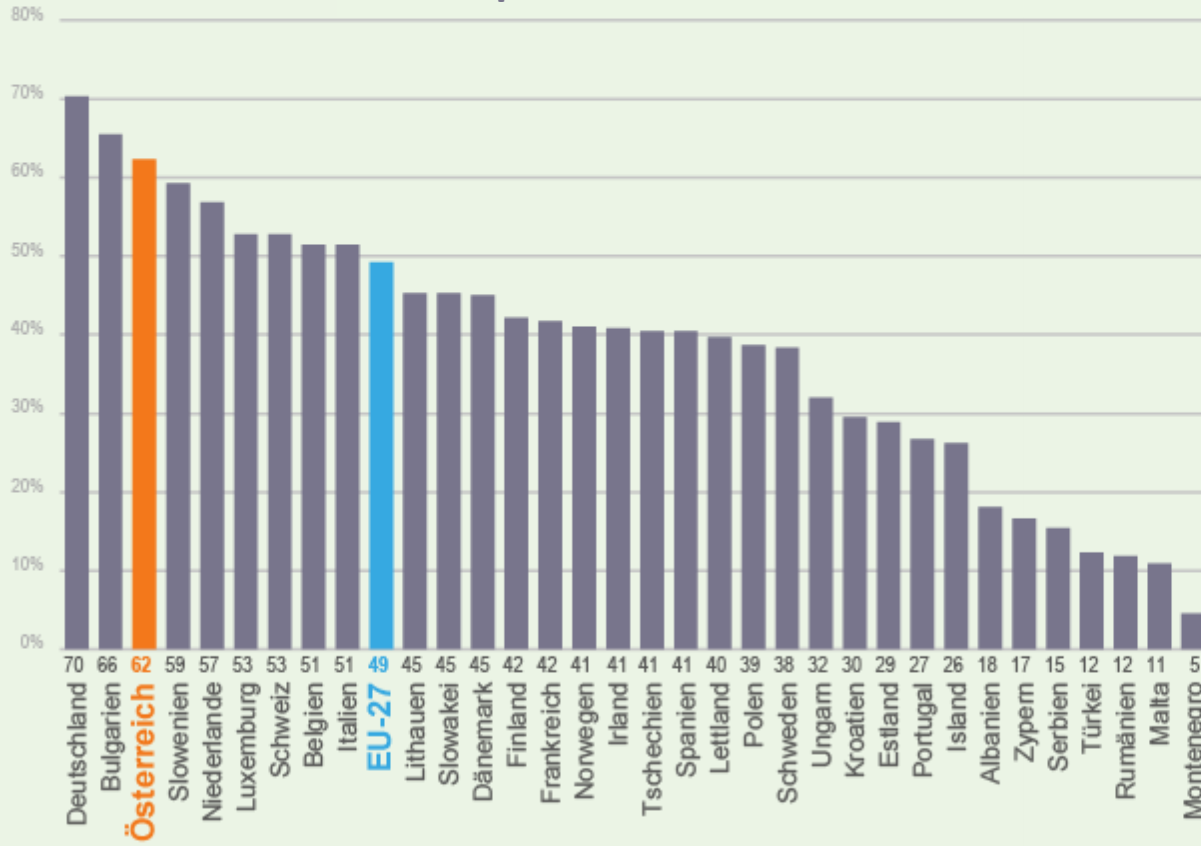


source: CEWEP 2024

# Municipal waste treatment



## Recycling rates for municipal wastes in Europe



### Recycling of municipal waste

62% were recycled in 2020



### Municipal wastes in WtE

36% were thermally recovered in 2020



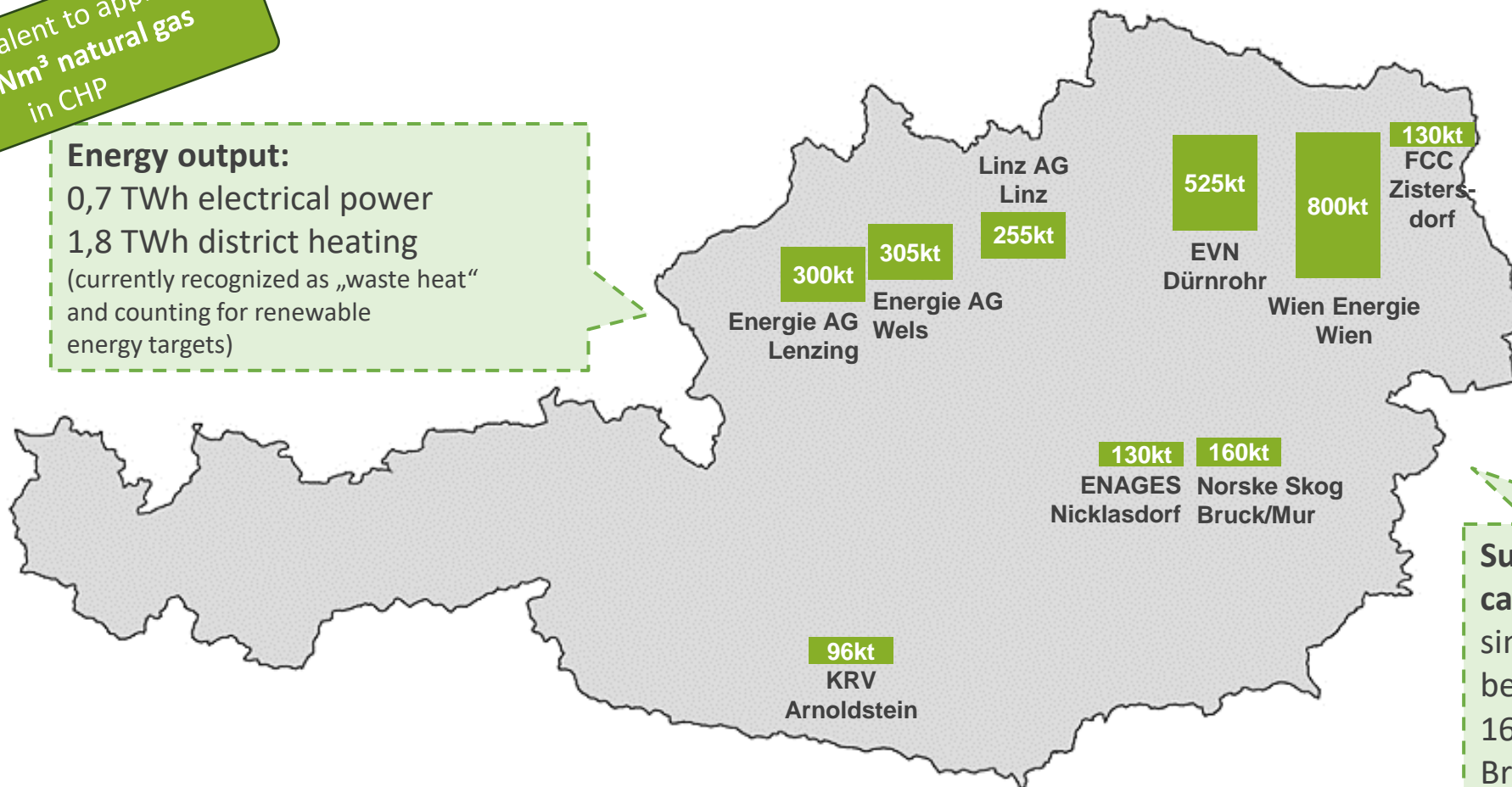
# WtE plants in Austria



equivalent to appr.  
300 MNm<sup>3</sup> natural gas  
in CHP

## Energy output:

0,7 TWh electrical power  
1,8 TWh district heating  
(currently recognized as „waste heat“  
and counting for renewable  
energy targets)

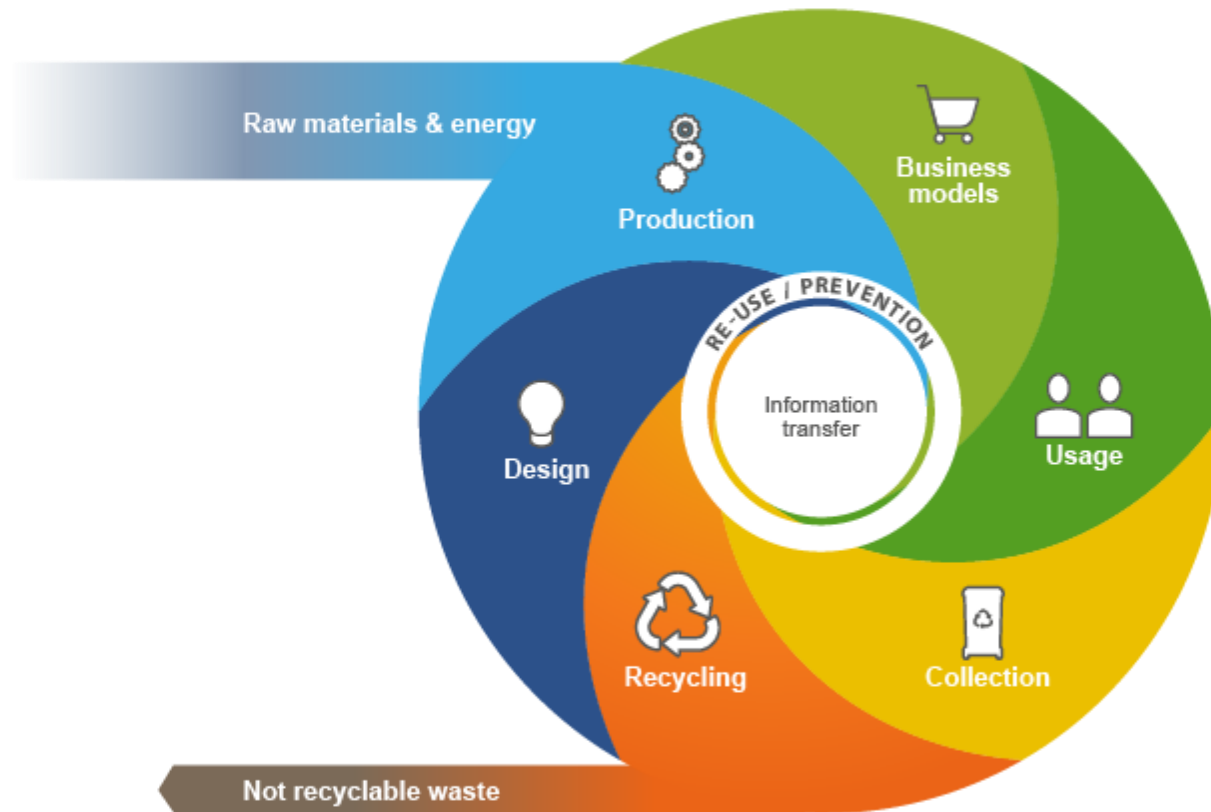


**Sum: 2,7 Mio t WtE capacity**  
since 2022 new fluidized bed incinerator  
160.000 t/a Norske Skog Bruck/Mur

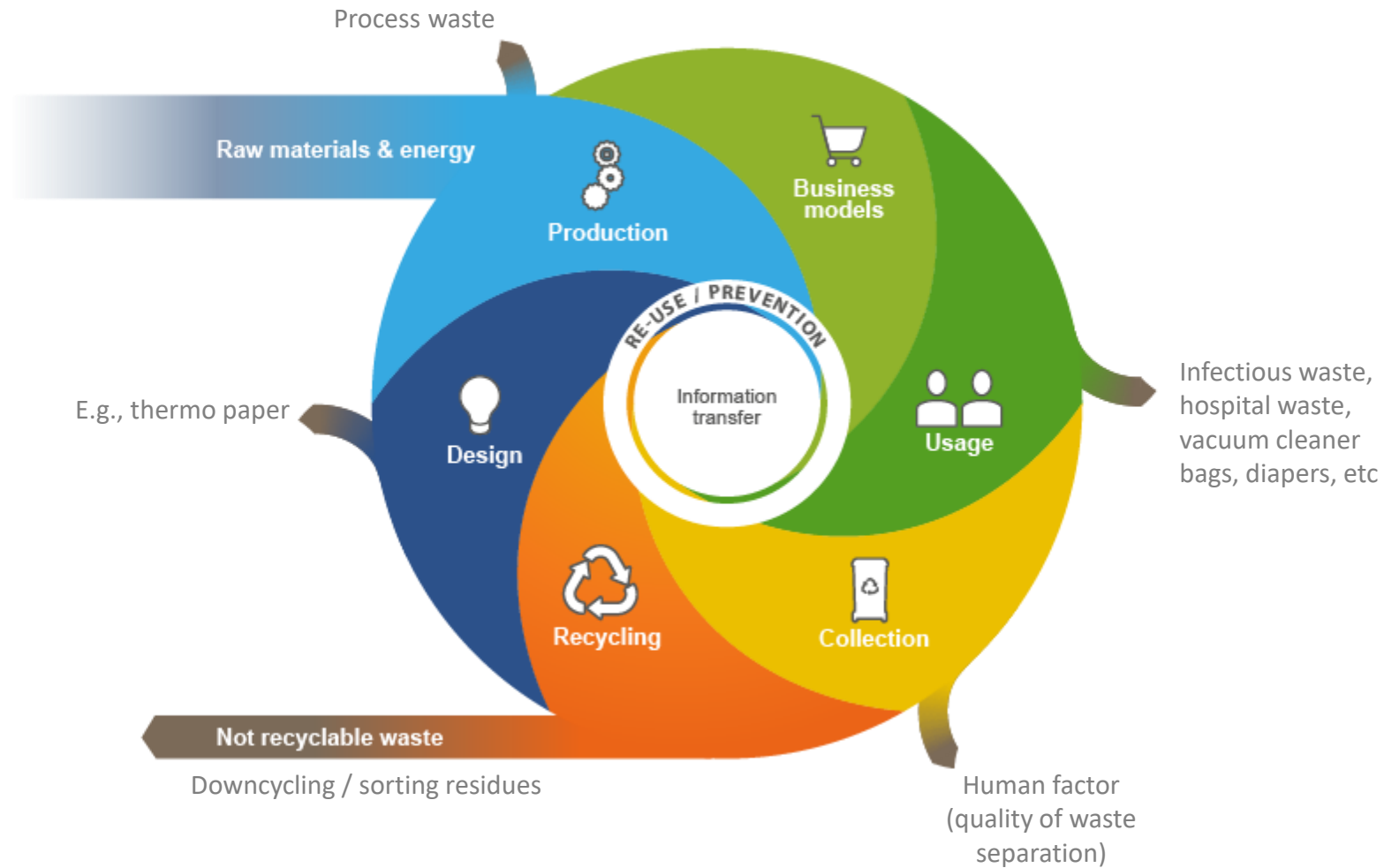
**WtE in Austria is highly accepted**



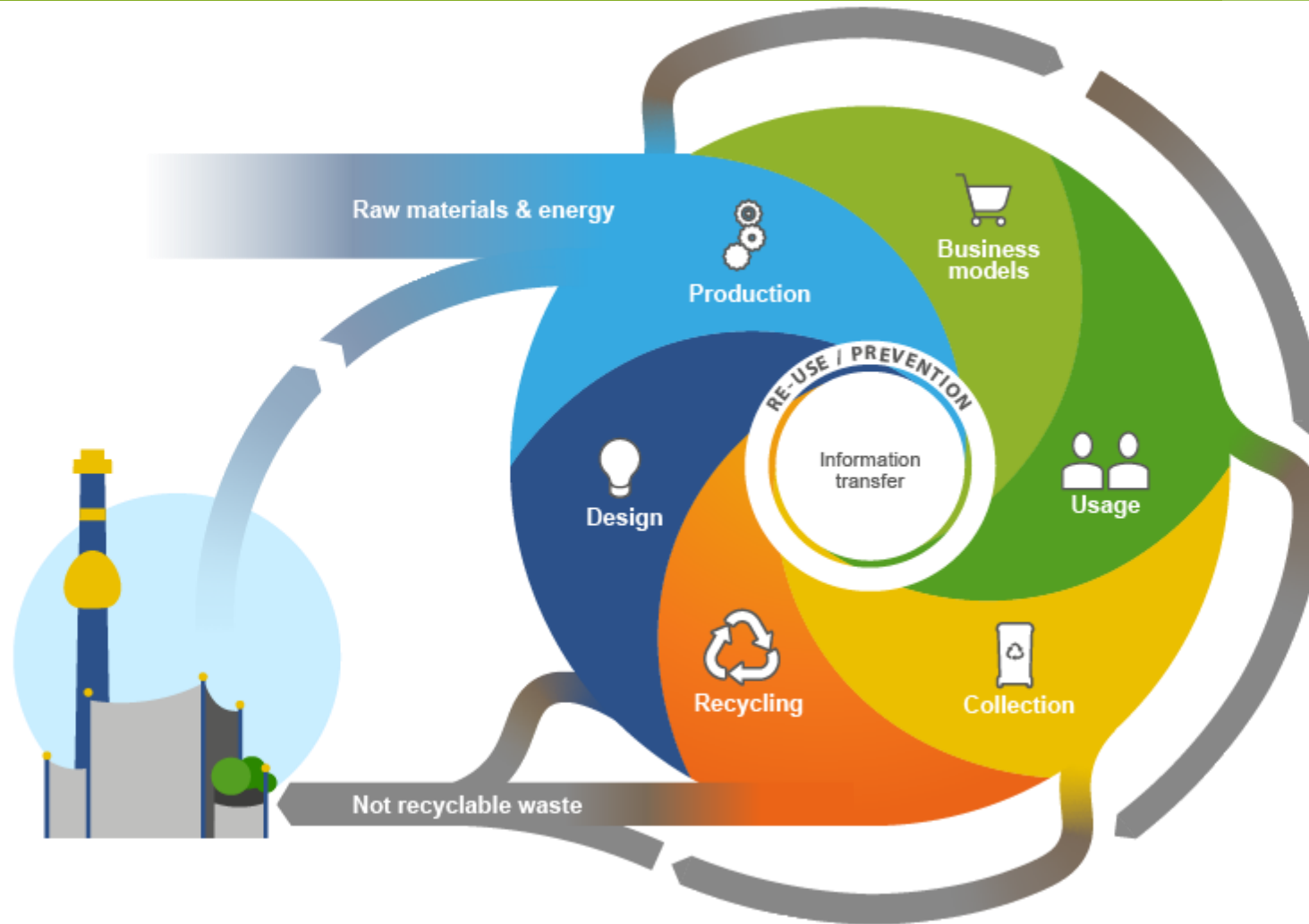
# The „REST of the REST“: non-recyclable wastes in the life cycle of products



# The „REST of the REST“: non-recyclable wastes in the life cycle of products



# The „REST of the REST“: non-recyclable wastes in the life cycle of products



By integrating WtE, raw materials and energy are recovered and the cycle is closed!



# Municipal waste sorting and residue recovery achieve many products!



Municipal waste



Paper, cardboards



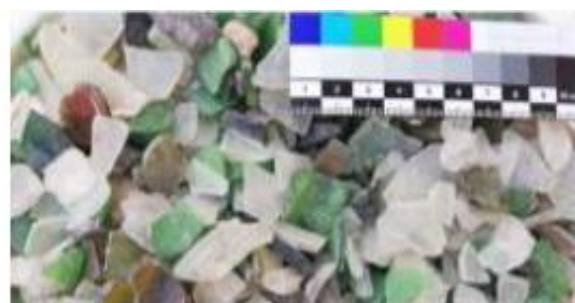
Polymers



Metals



Residues



Glass



Building materials



Metals

# Moving from waste management to circular economy including WtE



## Waste

- reduce volume
- hygienisation
- reduce mass



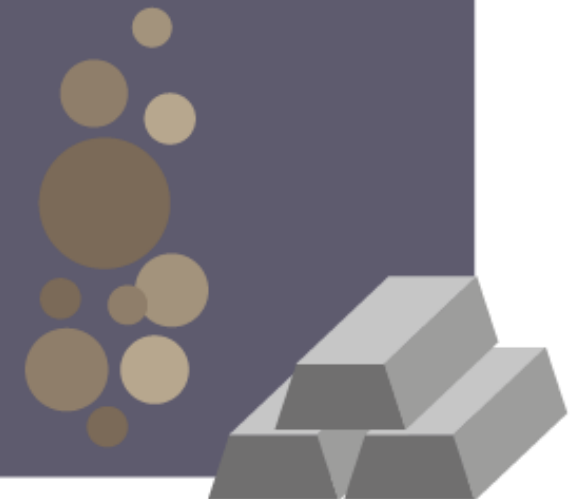
## Energy

- power
- steam
- heat
- cold



## Resources

- metals
- minerals
- CO<sub>2</sub>
- water
- and many others



# Wien Energie goes circular!

Many projects and platforms for a circular future



# Questions?

**DI Alexander Kirchner, MBA**  
Wien Energie GmbH



authorized officer, division manager  
energy production & circular economy

+43 664 6235151  
[alexander.kirchner@wienenergie.at](mailto:alexander.kirchner@wienenergie.at)



**Let's close the  
loop together!**

# Backup

 WIEN ENERGIE

DIE ENERGIE VON WIEN

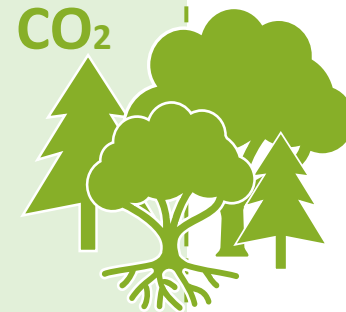


# Sustainable biogenic CO<sub>2</sub> from WtE

Austrian ministry officials are still insisting on certifying green CO<sub>2</sub> and believe it will be mandatory for all MS



- Austrian regulation (“Biomasseenergie-Nachhaltigkeitsverordnung”) for **RED III Art. 29/30 criteria** → **opinion of fed. ministry** this is eligible for WtE as well
- **Austrian WtE operators need a system acc. RED III Art. 29**
  - all other MS in EU have an exemption
  - fed. ministry thinks this is will be mandatory for all EU MS in the future
- Certification for biogenic CO<sub>2</sub> out of wastes can be done using **SURE** or (possibly) **ISCC systems**
  - systems require the **certification of all prior waste owners** (including the producers) → **practically impossible** to implement for WtE
- Without certification: WtE will **need to buy ETS certificates** for their **biogenic CO<sub>2</sub>** as well
  - *possibly higher scope emissions including fossil count of energy output – still tbd*
  - *Austrian WtE operators decline to implement certification system*
- **CCU**: possible partners for biogenic CO<sub>2</sub> require certification acc RED III Art 29/30



# Carbon Management Strategy

...will be an important basis for CCUS projects especially for hard to abate (including WtE)



## Carbon Management Strategy

CCU

CCS

PIPELINE  
INFRASTRUCTURE

CDR

HARD TO ABATE Industry

- **National Carbon Management Strategy** being developed by the Federal Ministry
- This initiative underscores the government's commitment to achieving environmental goals and addressing climate change challenges effectively
- The Federal Ministry communicated an **ambitious timeline** – the Austrian Carbon Management Strategy should be **completed by June 2024** - discussions with relevant stakeholders are currently taking place
- The lifting of the **CCS (Carbon Capture and Storage) ban** in Austria is being discussed
- Focus on **CCS** (including export) will be **for hard to abate industries** (including WtE)
- The development of robust **pipeline infrastructure** is crucial for CCU and CCS